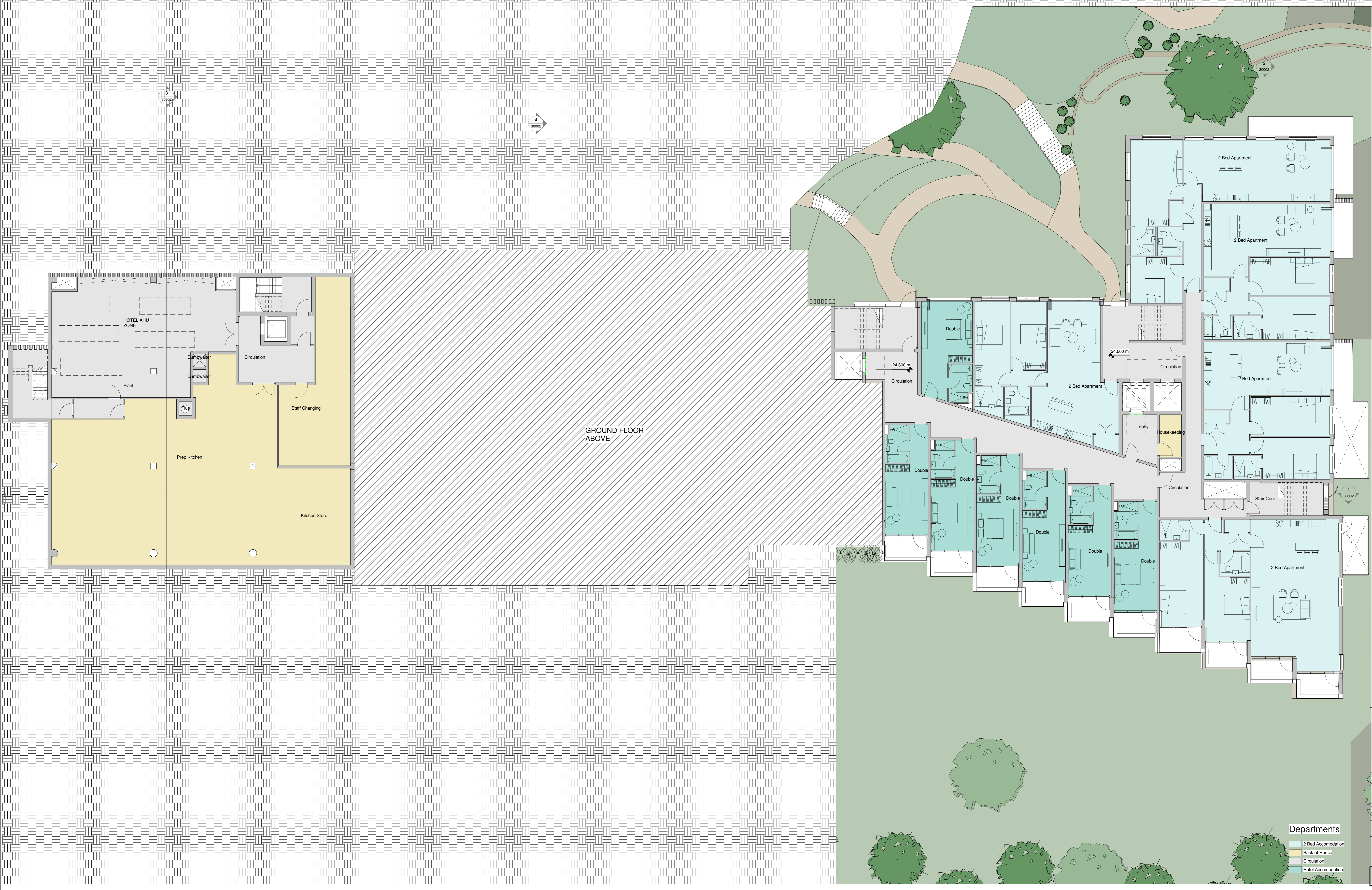
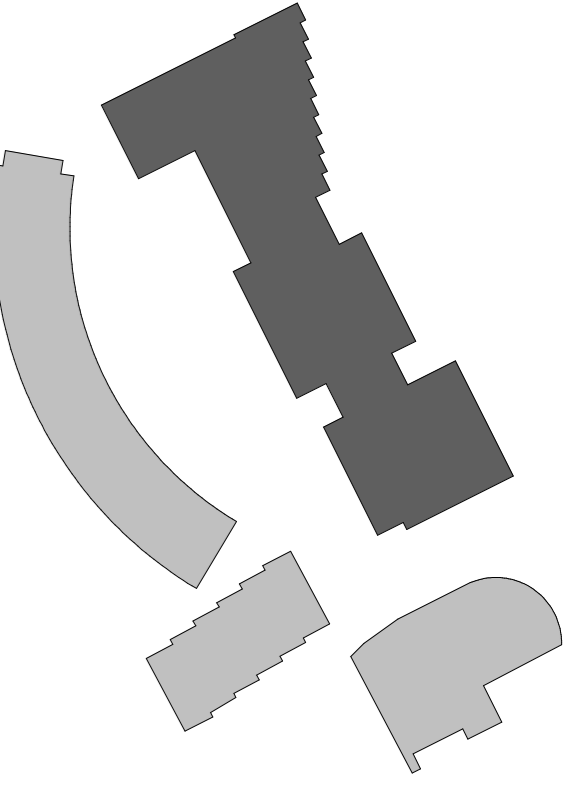


Notes  
Do not scale from this document, unless for the purposes of planning applications where a scale has to be provided. Refer to Squared dimensions only. All dimensions to be checked on site prior to construction. Report all discrepancies or anomalies to the Document Originator immediately. This document is to be read in conjunction with relevant documents, drawings and standards.

Key Plan



Rev	Date	Notes	Dim	Chk'd
P05	18/10/22	Planning Issue		KM MAG

Document Originator

**AWW**  
 London 106 Watton Street, B51 3QB 020 7140 8000  
 Plymouth East Quay House, PL4 8BN 01752 201 2542  
 Bristol port + main, 48-50 Station Street, BS1 1GB 0117 923 2530  
 RIBA Chartered Practice www.aww-uk.com

Client  
Kingfisher Resorts Studland Ltd

AWW Project Number 4561 Project Stage

Project Title  
Kings House Hotel Studland

Title  
Hotel - Lower Ground - Proposed

Scale	IP	AO	Document Status
As			Indicated
4561	AWW	T3	LG DR A 10002 P05

Departments

- 2 Bed Accommodation
- Back of House
- Circulation
- Hotel Accommodation